

# WEBSense Enterprise



## Websense Enterprise v4.4, Hewlett-Packard Web Cache Edition

Used by more than 16,500 organizations worldwide, including over half of the *Fortune 500*, Websense Enterprise is the world's leading employee Internet management (EIM) software solution. Websense Enterprise v4.4, Hewlett-Packard Web Cache Edition allows you to transparently monitor, manage and report on traffic flowing from your internal networks to the Internet. Using pass-through technology, it is tightly integrated with the Hewlett-Packard Web Cache, giving you the most accurate, reliable and scalable Internet filtering solution available. Websense Enterprise is also easy to install and administer.

### Adaptive Policy Management

Websense software adapts to support your company's Internet access policy. Featuring eight different flexible management options, Websense Enterprise can be highly customized. In addition to **blocking** and **permitting** access, other features include:

#### Time-based quotas

Balance work-related vs. personal surfing while reducing the burden on IT. With time-based quotas, you can permit employees to access non-work-related sites for limited, but appropriate amounts of time. For example, permit access to banking and shopping sites for up to 20 minutes per day.

#### Continue/defer

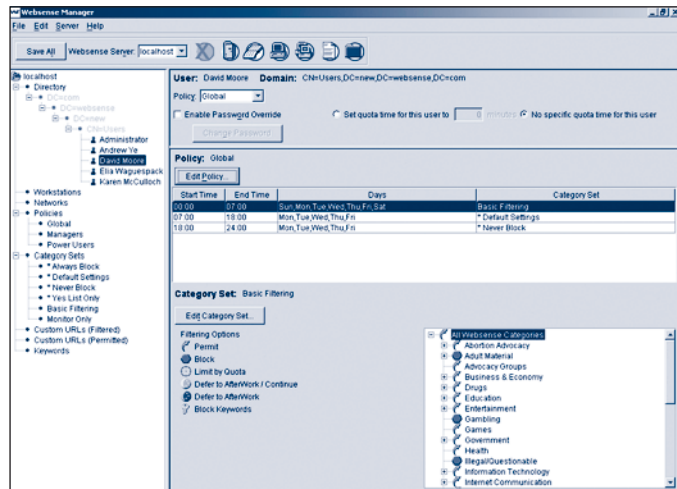
Let users choose to "continue" surfing blocked sites they deem work-related or "defer" personal surfing to non-work hours. Deferred sites are bookmarked automatically for employees at AfterWork.com, a free site hosted and maintained by Websense.

#### Time of day

All filtering options can be set up by specific time of day. For example, block access to shopping during business hours and permit access at all other times.

#### Customized Internet access policies

Set up Internet access by user, group, department, workstation or network. For example, customize access by job function, such as Management vs. Purchasing Department, or set up access for individuals such as the CEO or VP of Marketing.



Websense v4.4 enables you to customize policies for different users and groups.

### Complete user/group support

Customize access policies based on users and groups as defined in Windows NT 4, Windows 2000 Active Directory (now with full native mode support) and LDAP-accessible directory services (iPlanet and Novell Directory Services). Logs and reports include user and group names for easy analysis.

### "Yes" lists

When appropriate, use "yes" lists to allow access only to specific sites. For example, allow the Shipping Department to access only UPS and FedEx sites.

### Intelligent Content Classification

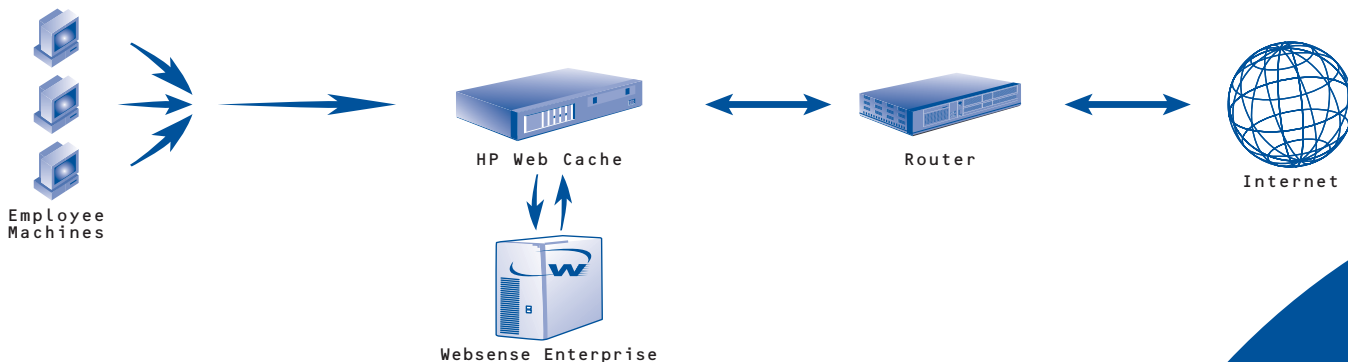
Websense utilizes the most advanced methods of collecting and classifying Web content (patent pending).

### Most comprehensive, accurate database in the industry

More than 3.5 million sites, representing 800 million Web pages and 44 languages organized in 75+ categories, provides comprehensive, accurate, thorough Internet filtering.

### Filter by file name and type

Regulate downloads of files by file name or extension, including streaming audio, video and images. Limit the download of MP3s, JPEGs and other bandwidth-intensive files on your network.



EMPLOYEE  
INTERNET  
MANAGEMENT  
SOFTWARE  
SOLUTIONS

### Dynamic database categories

Receive new database categories automatically from Websense as new topics emerge on the Internet.

### Advanced filtering with Premium Groups

For advanced Internet management, filter Premium Group categories:

#### Premium Group I - Productivity Management

Filter out distractions from the workplace by blocking banner ads, instant messaging sites and other productivity draining sites.

#### Premium Group II - Bandwidth Management

Manage your bandwidth by filtering out streaming media, online radio and other bandwidth intensive sites.

### Optional URL keyword filtering

Enhance filtering by blocking sites whose URLs contain specific words, such as "sex" and "porn."

### Logging and Reporting

Analyze Internet use at your company with Websense Reporter's comprehensive logging and reporting functions.

### Report on Internet activity

Choose from 60+ reports, tables and charts, including the most frequently visited sites and most active users.

### Customizable reporting

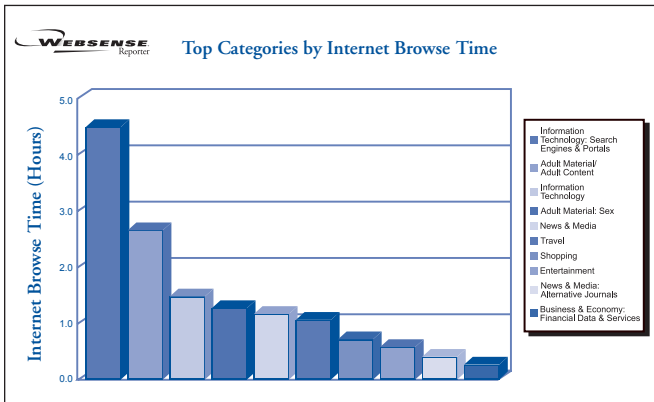
Modify reports to focus on the information that's important to your company.

### Report scheduling and delivery

Schedule reports to be produced daily, weekly or monthly, and deliver them automatically via email.

### Internet browse time reports

Produce reports that show the amount of time spent surfing the Internet by user, category and more.



Choose from more than 60 report formats.

### Easy Administration

Websense is easy to install and maintain, ensuring a quick and efficient solution for your company.

### Transparent user identification

Automatically identify users by Windows user name. Because users are not required to enter a user name and password for Websense, user/group identification is completely transparent and easy to implement. Now supports user names in Japanese, French, German and Spanish.

### Customized block pages

Tailor the page users see when they've requested a blocked site. Create your own page with your company's logo and Internet access policy, edit text on the Websense page or use the default Websense page.

### Automatic daily updates

Updates to the database are automatically downloaded to your server every day to ensure you're using the freshest, most reliable database possible. Only changes and additions are downloaded to save you bandwidth and time.

### Remote administration

Configure Websense from any Microsoft Windows 98, NT, 2000 or Sun Solaris machine in the network.

### Administrative alerting

Receive email notification of important Websense system events.

### Policy duration notice

When users request sites that have been blocked, Websense lets them know if and when access to these sites is permitted.

### Easy Deployment in Your Network

Websense Enterprise v4.4 is deployed on a separate, dedicated machine and communicates with the Hewlett-Packard Web Cache over the network. Run Websense on Microsoft Windows NT, Windows 2000, Sun Solaris or Red Hat Linux operating systems.

### Hewlett-Packard Web Cache requirements:

- Hewlett-Packard Web Cache running Inktomi Traffic Server Engine 4.0.15 or later

### Websense Server requirements:

- Pentium II or greater processor with 256 MB RAM
- Microsoft Windows NT 4 (Service Pack 5 or greater), Windows 2000 (Service Pack 1 or greater) or Red Hat Linux 6.2 or 7.1 or
- Ultra SPARC II processor with 256 MB RAM
- Sun Solaris 2.6, 2.7 or 2.8

*Download a free fully-functional 30-day trial at [www.websense.com](http://www.websense.com) today!*

Websense Headquarters  
10240 Sorrento Valley Rd  
San Diego, CA 92121  
USA

Websense Europe  
3000 Hillwood Drive  
Chertsey, Surrey KT16 0RS  
England

Websense France  
54-56, avenue Hoche  
75008 Paris  
France

Websense Germany  
Arnulfstrasse 27  
80335 Munich  
Germany

Websense Japan  
Level 32, Shinjuku Nomura Bldg  
1-26-2 Nishi-Shinjuku  
Shinjuku-ku, Tokyo  
Japan 163-0532

tel 800.723.1166  
858.320.8000  
fax 858.458.2950  
[www.websense.com](http://www.websense.com)

tel +44 (0)1932 796001  
fax +44 (0)1932 796601

tel +33 (0)1 56 60 58 14  
fax +33 (0)1 56 60 56 00  
[www.websense.fr](http://www.websense.fr)

tel +49 (0)89 59047 256  
fax +49 (0)89 59047 200  
[www.deutsch.websense.com](http://www.deutsch.websense.com)

tel 813-5322-1335  
fax 813-5322-2929  
[www.japan.websense.com](http://www.japan.websense.com)